

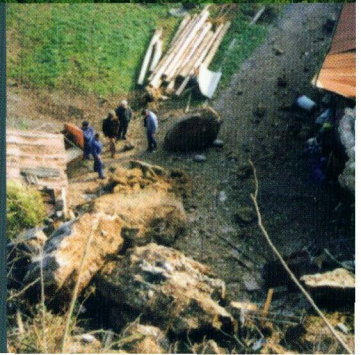


# LANDSLIDE HAZARD AND RISK

EDITORS THOMAS GLADE · MALCOLM ANDERSON · MICHAEL J. CROZIER



 WILEY



# **Landslide Hazard and Risk**

Edited by

**Thomas Glade, Malcolm Anderson & Michael Crozier**

Publisher : John Wiley & Sons

- 1. Landslide hazard and risk: Issues, concepts and approach**  
M.J. Crozier & T. Glade

## **PART I – CONCEPTUAL MODELS IN APPROACHING LANDSLIDE RISK**

- 2. The nature of landslide hazard and impact**  
T. Glade & M.J. Crozier
- 3. Scale dependency of landslide hazard and risk analysis**  
T. Glade & M.J. Crozier
- 4. Systematic procedures of landslide-hazard mapping for risk assessment using spatial prediction models**  
C.-J. Chung & A. Fabbri
- 5. Vulnerability to landslide**  
D. Alexander

## **PART II - EVALUATION OF RISK**

- 6. Landslide risk perception, knowledge, and associated risk management: Case studies and general lessons from Glacier National Park, Montana, USA**  
D. Butler & L. DeChano
- 7. Cultural consideration in landslide risk perception**  
G. Harmsworth & B. Raynor
- 8. Reply of insurance industry to landslide risk**  
H.-L. Paus
- 9. The role of administrative bodies in landslide risk assessments**  
K. Hollenstein

## **PART III - MANAGEMENT OF LANDSLIDE RISK**

- 10. Addressing landslide hazards: Towards a knowledge management perspective**  
S. Michaels
- 11. Management frameworks for landslide hazard and risk: issues and options**  
M.J. Crozier

12. **Reducing landslide hazards and risk in the United States: The role of the U.S. Geological Survey**  
G.F. Wieczorek, P.L. Gori & L.M. Highland
13. **Basic data and decision support for landslide management: A conceptual framework**  
W. Pflügener
14. **Instability management from policy to practice**  
R. McInnes
15. **Geomorphological mapping to assess landslide risk: concepts, methods and applications in the Umbria Region of Central Italy**  
P. Reichenbach, M. Galli, M. Cardinali, F. Guzzetti & F. Ardizzone
16. **Remote sensing of landslides**  
V. Singhroy
17. **The rise and fall of a debris-flow warning system for the San Francisco Bay Region, California, USA**  
R. Wilson
18. **Reforestation schemes to manage regional landslide risk**  
C. Phillips & M. Marden
19. **Geotechnical structures for landslide risk reduction**  
E.N. Bromhead

#### **PART IV – ‘END-TO-END SOLUTIONS’ FOR LANDSLIDE RISK ASSESSMENT**

20. **Towards the development of a landslide risk assessment for rural roads in Nepal**  
D.N. Petley, G.J. Hearn & A. Hart
21. **Quantitative landslide risk assessment of Cairns, Australia**  
M. Michael-Leiba, F. Baynes, G. Scott & K. Grenger
22. **History of the use of the risk management process in slope safety management in Hong Kong**  
A.W. Malone
23. **Rockfall risk management in high density urban areas: The Andorran experience**  
R. Copons, J.M. Vilaplana, J. Corominas, J. Altimir & J. Amigó
24. **Landslide risk assessments in Italy**  
M. Sorriso-Valvo
25. **An initial approach to identifying slope stability controls in southern Java and to providing community- based landslide warning information**  
D. Karnawati, I. Ibriam, M.G. Anderson, E.A. Holcombe, G.T. Mummery, J.-P. Renaud & Y. Wang

## **PART V - CONCLUSION**

### **26. Perspectives for landslide hazard and risk assessments**

M.J. Crozier, T. Glade & M.G. Anderson