

Sommersemester 2013

Helmut Satzinger: Ägyptische Kunst II

work in progress

TEIL 1

18. Dynastie: königliche Rundplastik Vor Amarna

Vorausgehende 17. Dynastie:

Pharaoh	Prenomen	Reign (BCE)	Burial	Consort(s)
Rahotep	Sekhemre-wahkhaw	ca 1585 BC		
Sobekemsaf I	Sekhemre-wadjkhaw	7 years		Nubemhat
Sobekemsaf II	Sekhemre-shedtawy		Robbed during the reign of Ramesses IX	Nubkhaes
Intef	Sekhemre-wepmaat		Dra' Abu el-Naga'?	
Intef	Nubkheperre		Dra' Abu el-Naga'	Sobekemsaf
Sekhemre-Heruhirmaat Intef	Sekhemre-heruhermaat			Haankhes
Ahmose	Senakhtenre	1 year		Tetisheri
Tao	Seqenenre	c. 1560 4 years		Ahmose Inhapy
Sitdjehuti				
Ahhotep I				
Kamose	Wadjkheperre	1555 to 1550 BC 5 years		Ahhotep II?

Pharaoh	Prenomen	Reign (BCE)	Burial	Consort(s)
Rahotep	Sekhemre-wahkhaw	ca 1585 BC		
Sobekemsaf I	Sekhemre-wadjkhaw	7 years		Nubemhat
Sobekemsaf II	Sekhemre-shedtawy		Robbed during the reign of Ramesses IX	Nubkhaes
Intef	Sekhemre-wepmaat		Dra' Abu el-Naga'?	
Intef	Nubkheperre		Dra' Abu el-Naga'	Sobekemsaf
Sekhemre-Heruhirmaat Intef	Sekhemre-heruhermaat			Haankhes
Ahmose	Senakhtenre	1 year		Tetisheri
Tao	Seqenenre	c. 1560 4 years		Ahmose Inhapy
Sitdjehuti				
Ahhotep I				
Kamose	Wadjkheperre	1555 to 1550 BC 5 years		Ahhotep II?



gty.im/
122321511

by
DEA PICTURE LIBRARY



Gesicht vom Sarg der Königin Dat-djehuti / Sidhowt
Holz, stuckiert und verguldet; Augen Kupfer, Marmor, Obsidian
Höhe 34 Späte 17. Dynastie, um 1575
München ÄS 7136

The background of the slide is a photograph of ancient Egyptian hieroglyphs and a large carved figure. The figure is a seated man, likely a pharaoh, wearing a tall, white, pleated headdress (nemes) and a long, white, pleated kilt. He is shown in profile, facing right. The hieroglyphs are arranged in vertical columns, some within cartouches. The overall color scheme is a mix of natural stone tones and a blueish tint, possibly from a scan or a specific filter.

Neues Reich

18. Dynastie: ca. 1550–1292

Ramessidenzeit:

19. Dynastie: ca. 1292 –1195

20. Dynastie: ca. 1196–1070

18. Dynastie (ca. 1550 bis 1292)

Thonname	Geburtsname	Daten (beispielsweise)
<i>njswt-bjtj</i>	<i>z3-R^c</i>	
Nebpehtyre	Ahmose I	1550 – 1525
Djeserkare	Amenophis (Amenhotep) I	1525 – 1504
Akheperkare	Tuthmosis (Thutmose) I	1504 – 1492
Akheperenre	Tuthmosis (Thutmose) II	1492 – 1479
Menkheperre	Tuthmosis (Thutmose) III	1479 – 1425
Maatkare	Hatschepsut	1479 – 1457
Akheperure	Amenophis (Amenhotep)II	1427 – 1401
Menkheperure	Tuthmosis (Thutmose) IV	1401 – 1391
Nebmaatre	Amenophis (Amenhotep)III	1391 – 1353
Neferkheperure-waenre	Echnaton (Akhenaten)	1353 – 1334
Ankhkheperure	Smenchkare	1336 – 1334
Nebkheperure	Tutankhamun	1334 – 1325
Kheperkheprure	Eje (Ay)	1325 – 1321
Djeserkheperure	Haremhab (Horemheb)	1321 – 1292

Upper part of a limestone
statue of **Queen Ahmose-
Merytamun**

From Karnak, Egypt
Early 18th Dynasty, about
1500 BC

Height: 111 cm

The lower part is still at
Karnak

BM EA 93



Königin Mutnofret

Zeit Amenophis' I.



Limestone shabti figure of
King Ahmose

Probably from Thebes, Egypt
New Kingdom, 18th Dynasty,
around 1520 BC

The earliest known shabti of a
king

Height: 28.7 cm

Acquired in 1899

BM EA32191





Wooden statue of Queen Ahmose-Nefertari, excavated at Deir el-Medina, Dynasty XVIII; 43 cm; Fondazione Museo Antichita Egizie, Turin, Italy.

Das „Tuthmosidengesicht“:

Dreieckig (schmale Mundpartie)

Feine Adlernase



Typisch für die Könige von
Tuthmosis I. bis Amenophis II.

Das „Tuthmosidengesicht“:

Dreieckig (schmale Mundpartie)

Feine Adlernase



Typisch für die Könige von
Tuthmosis I. bis Amenophis II.

Das „Tuthmosidengesicht“:

Dreieckig (schmale Mundpartie)

Feine Adlernase



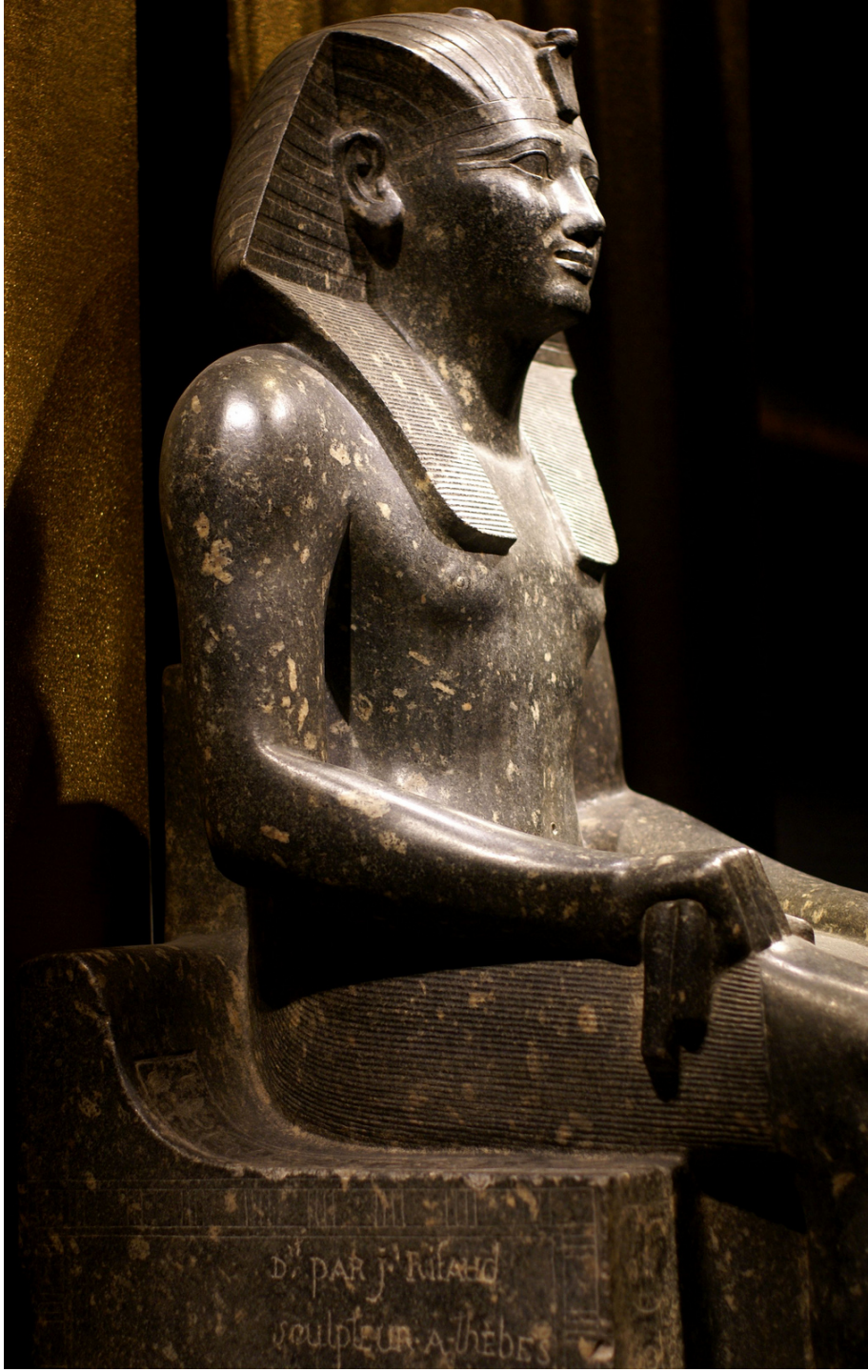
Typisch für die Könige von
Tuthmosis I. bis Amenophis II.



Tuthmosis I.

Museo Egizio Torino

© Mutnedjmet
(Flickr)



Tuthmosis I.

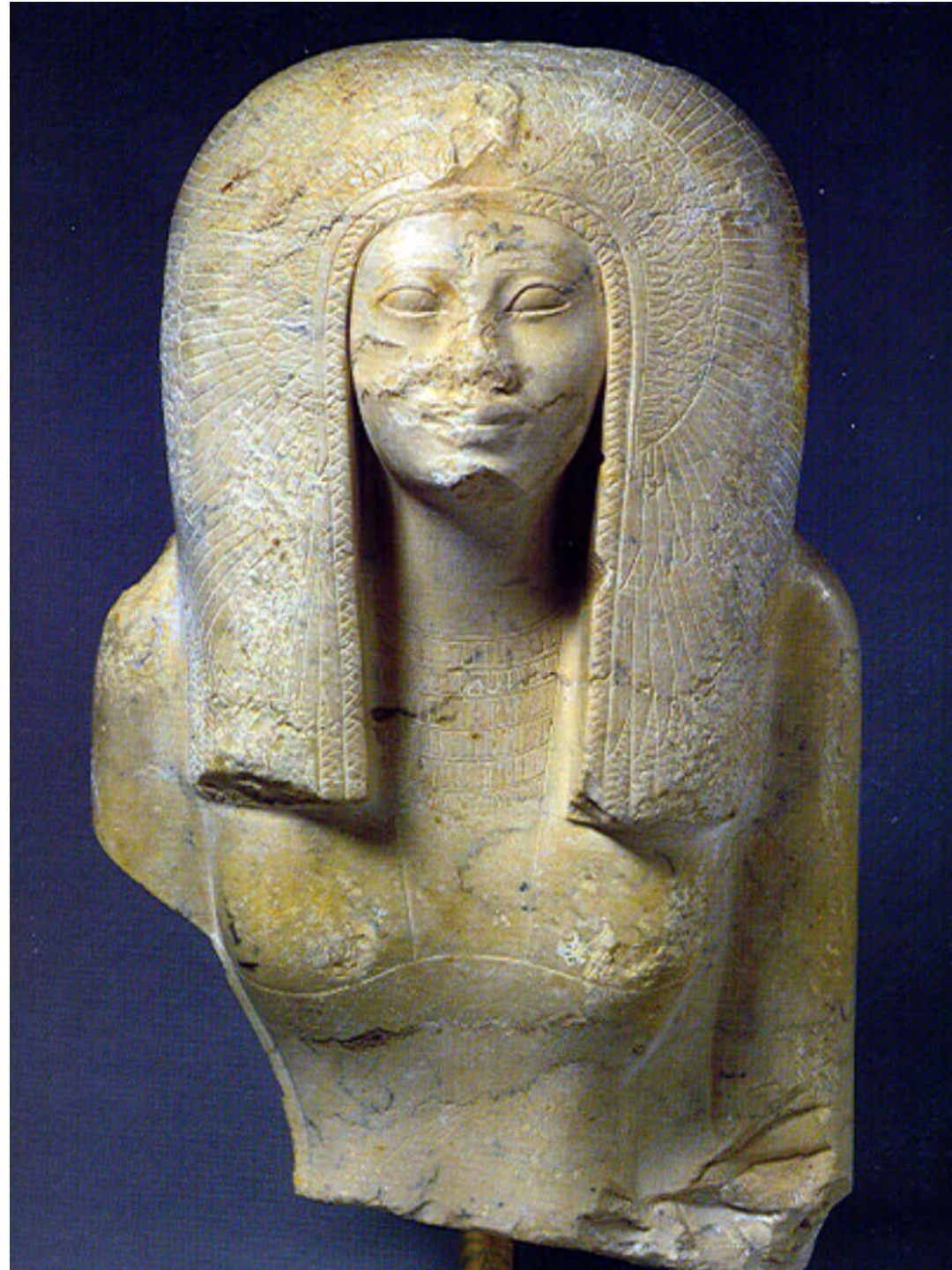
Museo Egizio Torino

© HEN-Magonza
(Flickr)





Königin
Kalkstein H. 28 cm
Theben
Anfang 18. Dynastie
New York MMA 16.10.224





Queen Hatshepsut

Dynasty 18, c.1473-1458 B.C.

Painted indurated limestone

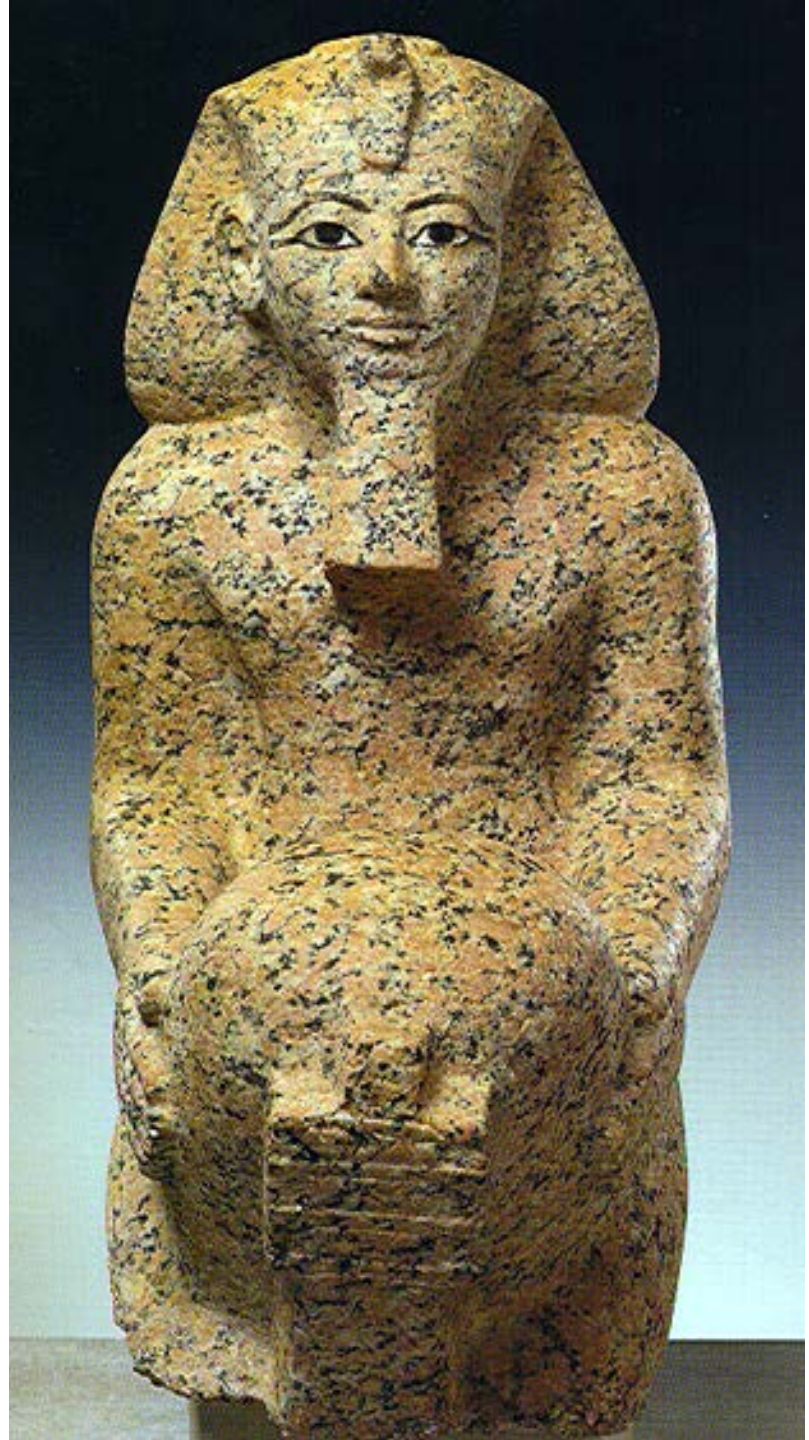
Height: 76 3/4 in. (194.9 cm)

Metropolitan Museum of Art, New York



Hatshepsut, knieend
Rosengranit H. 87 cm
Dêr el-Bahari
Berlin 22883

Hatschepsut, knieend
Rosengranit H. 86 cm
Dêr el-Bahari
New York MMA 23. 3.1



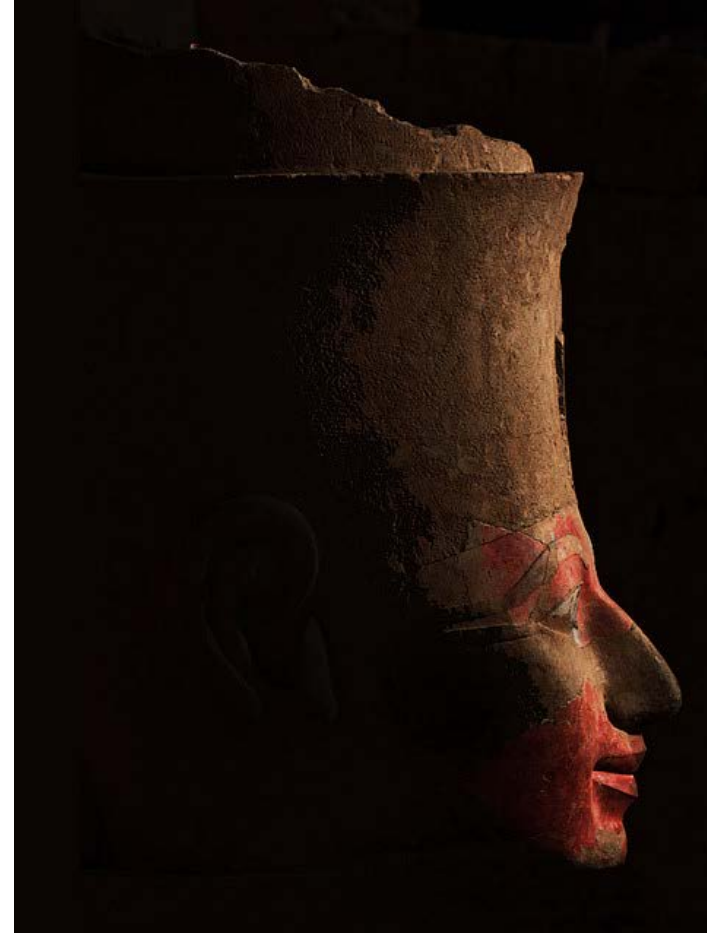
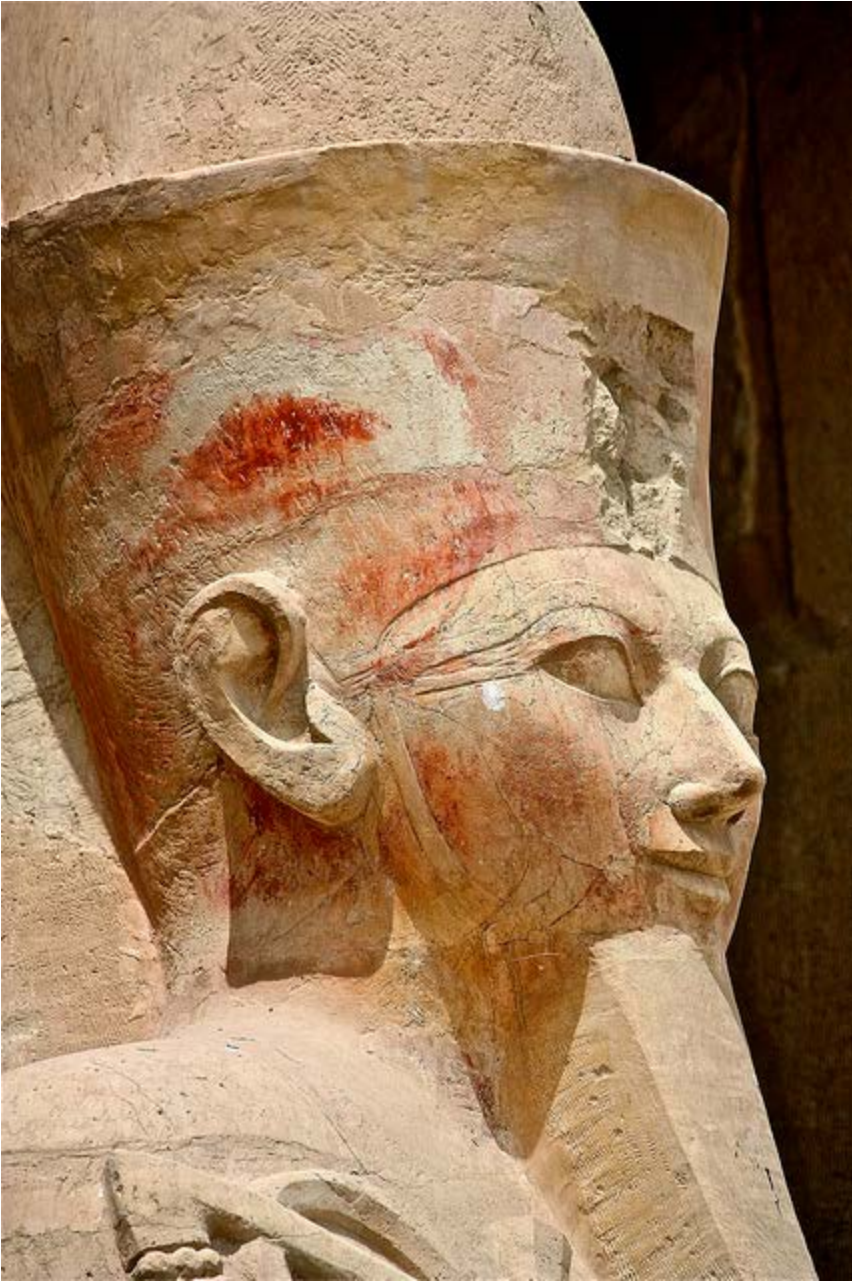




Vom Obeliscen der Hatschepsut
In Karnak

Kairo









© Mackenab Flickr



© cscotchmer Flickr



© insecula.com

Hatshepsut
MMA



32. Sfinge di Hatshepsut

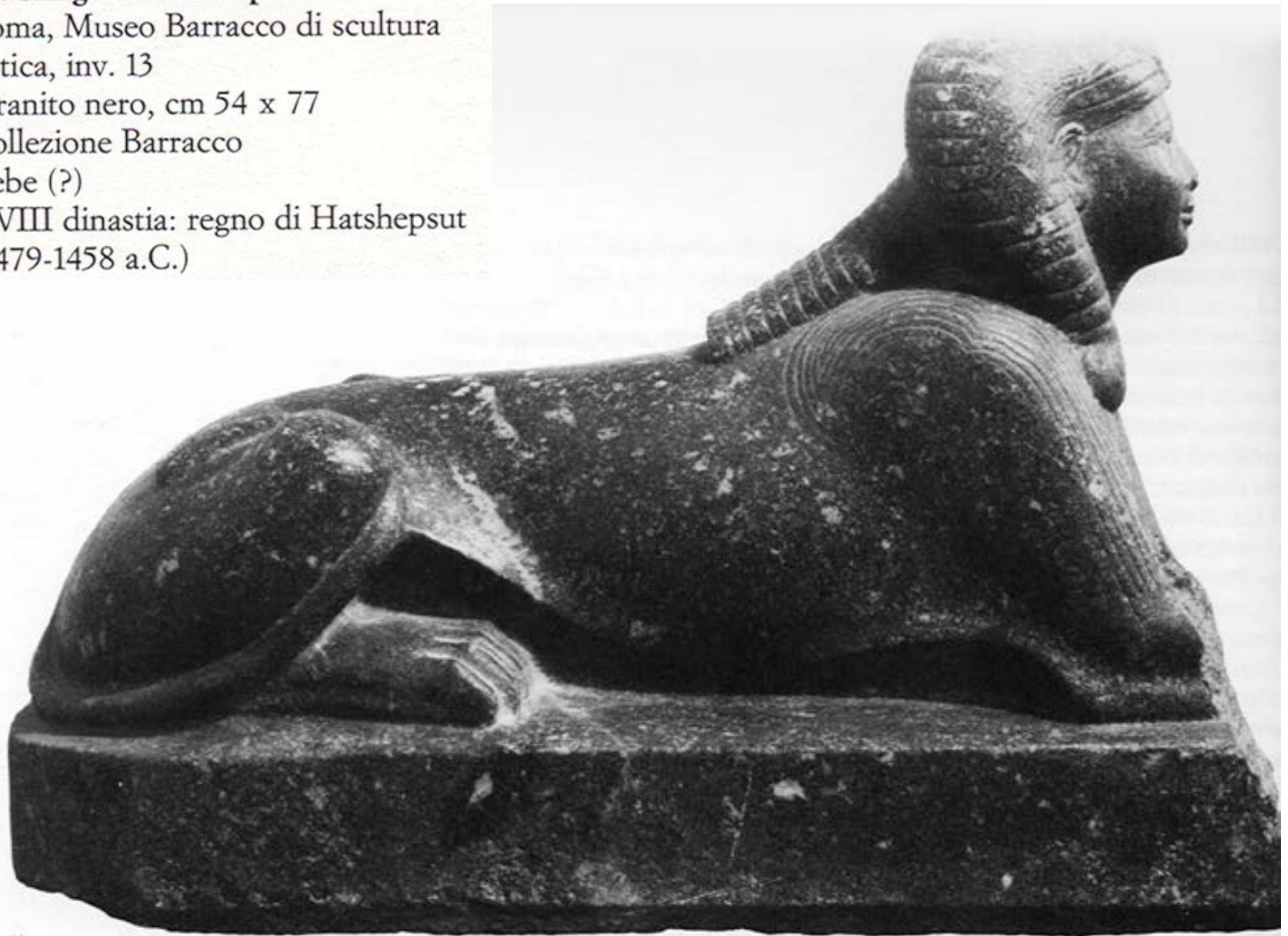
Roma, Museo Barracco di scultura
antica, inv. 13

Granito nero, cm 54 x 77

Collezione Barracco

Tebe (?)

XVIII dinastia: regno di Hatshepsut
(1479-1458 a.C.)



32. Sfinge di Hatshepsut

Roma, Museo Barracco di scultura
antica, inv. 13

Granito nero, cm 54 x 77

Collezione Barracco

Tebe (?)

XVIII dinastia: regno di Hatshepsut
(1479-1458 a.C.)





Tuthmosis III. erschlägt die
Feinde

Karnak-Tempel



Tuthmosis III.

Wien 70





Tuthmosis III.

Granodiorit H. 107 cm

Aus dem Karnak-Tempel

Kairo JE 39260;
heute im Luxor Museum



Tuthmosis III.
Karnak



Tuthmosis III wearing the white crown of Upper Egypt.
University of Pennsylvania Museum, Philadelphia.
© Hans Ollermann



Tuthmosis III. als Sphinx
Quarzit H. 23 cm New York MMA 08.202.6



Tuthmosis III. als Sphinx
Quarzit H. 13,5 cm Turin, Museo Egizio S 2673

Königin Isis

Zeit Tuthmosis' III.





Königin

Zeit Tuth-
mosis' III.

Wien 5778



Amenhotep II

Turin, Museo Egizio

© j. kunst Flickr

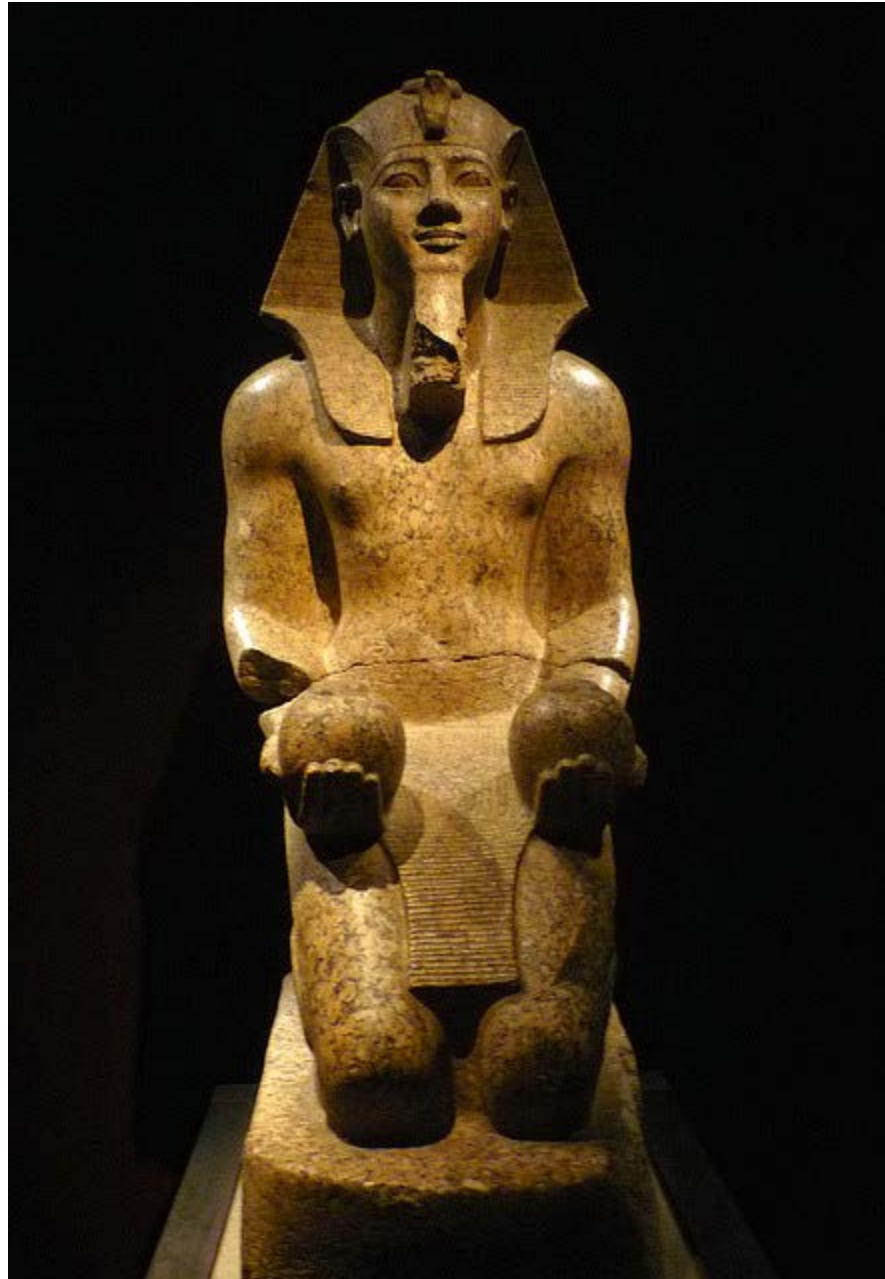


Amenhotep II

Kairo

Faraone Amenhotep II

Museo Egizio di Torino,
proveniente dal
Tempio di Amon in
Tebe



© Arnoldo Bolla

Amenhotep II

Museo Egizio, Turin



© Su55
Flickr



Amenhotep II - quartzite rouge - H. 35 cm - Musée du Louvre - Paris

© Sebastian Niedlich



Amenhotep II

Berlin

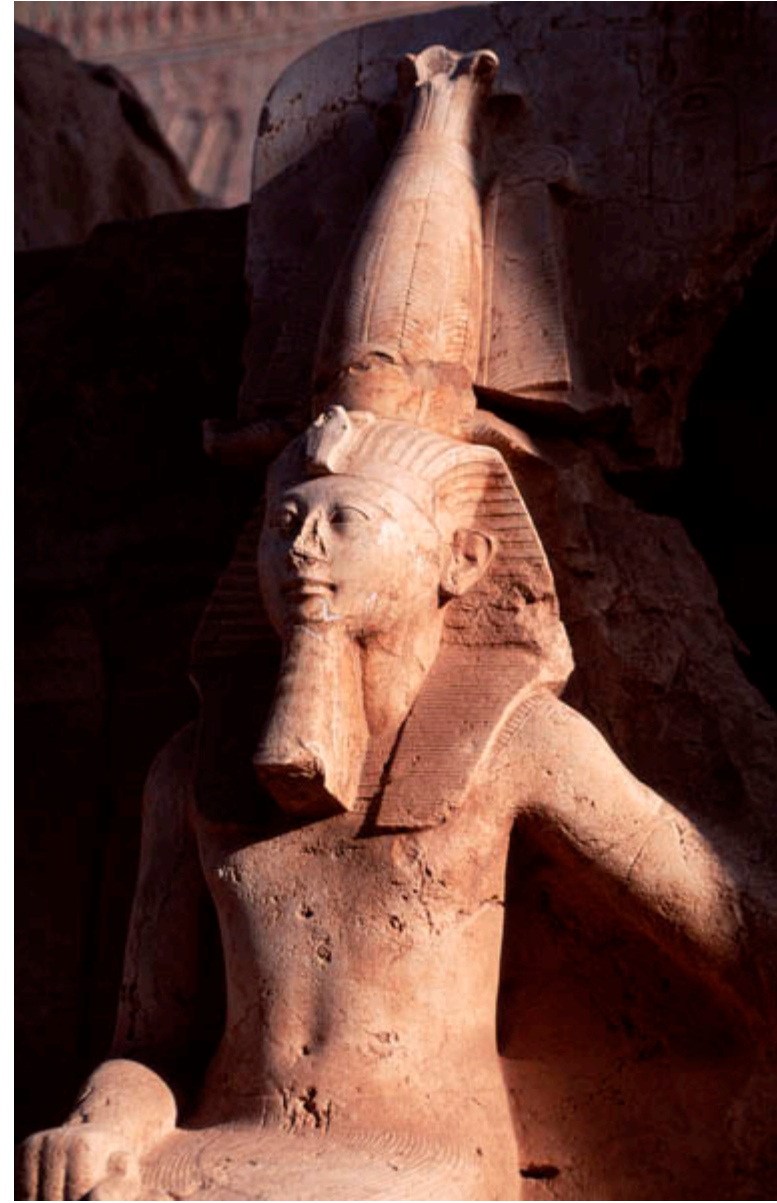


Amenhotep II at the Temple of Karnak

© Wolfgang Kaehler/CORBIS

Amenophis II.

Karnak-Tempel



© Erwin1964
Flickr



Amenophis II.
als Sphinx

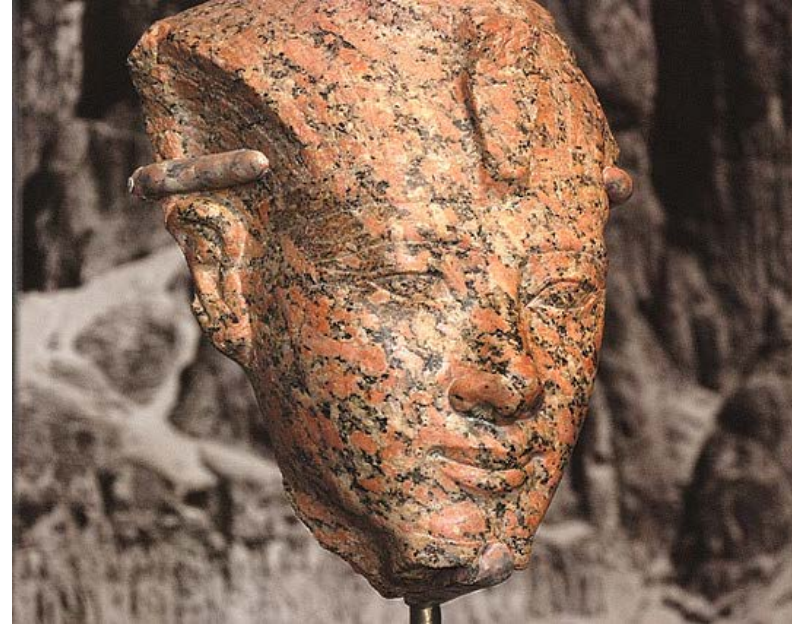
Mît Rahîna. 1984.

© Risotto al Caviale
Flickr

King Amenophis II
at Copenhagen –
Ny Carlsberg
Glyptotek



© Danish Museums
Flickr



Amenophis II,
Red Granite, dynasty 18, ca.1426-1400 B.C.
Brooklyn Museum, New York.